



The **VTech Fast Charge** fills new or tops-off used small cylinders (10-60 kg) with refrigerant supplied from bulk storage tanks. Users are typically Refrigerant Producers and/or Distributors who repackage the gas for resale. Therefore, large quantities and high production rates require a fully automated system with high-speed filling capabilities.

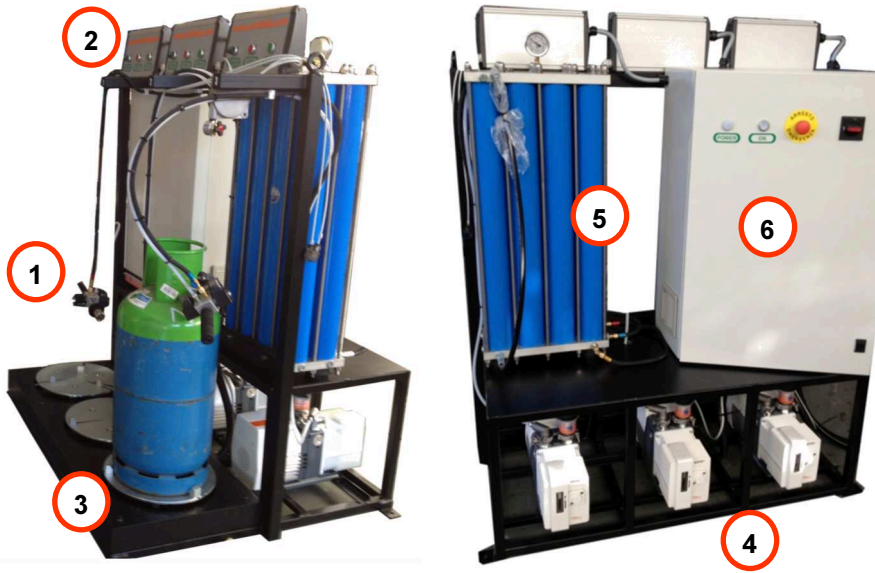
VTech's Fast Charge can fill multiple tanks at the same time, identifying the size of the cylinder as well as its tare weight by barcode scan, thereby preventing accidental overcharges.

Speed, flexibility and safety make VTech's Fast Charge the preferred refrigerant cylinder filling solution for industrial users worldwide.

#### MAIN FEATURES:

- **Versatile:** Standalone and Multiple station configuration
- **Fast and Safe:** Meets and exceeds the requirements of industrial users
- **Automatic:** barcoding creates automatic taring of the scale and tank recognition so incorrect charges are prevented
- **Scalable:** allows for future expansion

# Product Configuration

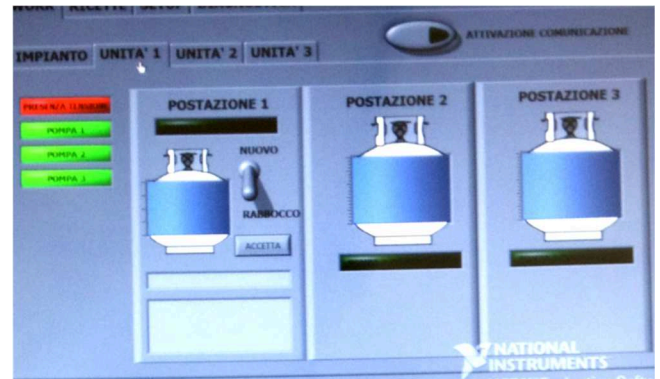


1. Refrigerant Fillers
2. Station Control Panel
3. Scales
4. Rotary Vane Vacuum Pumps
5. Accumulators
6. Electrical/Pneumatic Control Cabinet

VTech Fast Charge for three refrigerants

At the heart of the VTech Fast Charge is its intuitive Windows-based software, available in the language of preference, which shows the process status in real time. Simple menus consists of Active Cycle (Work), Recipe configuration, Setup and Diagnostics for troubleshooting.

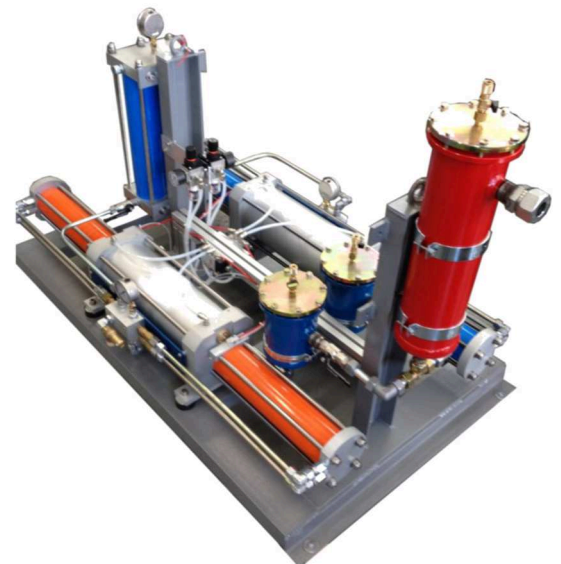
Vital to maintaining high speed charging is the pumping group consisting of multiple transfer pumps and refrigerant receivers (see below).



Software

# Product Specifications

|                         |                      |
|-------------------------|----------------------|
| Refrigerant Type        | HFC, HCFC and Blends |
| No. of Fillers          | 1-5                  |
| Suggested Tank Size     | 10-60 kg             |
| Filling Speed           | 250g/s               |
| Charging Accuracy       | ±1%                  |
| User Interface          | 15" Touch Screen     |
| Unit Presets            | 10                   |
| Vacuum Pump Size        | 10m <sup>3</sup> /h  |
| Compressed Air Required | 7 bar                |
| Barcode Scanning        | Optional             |



High Speed Double Pumping Group