



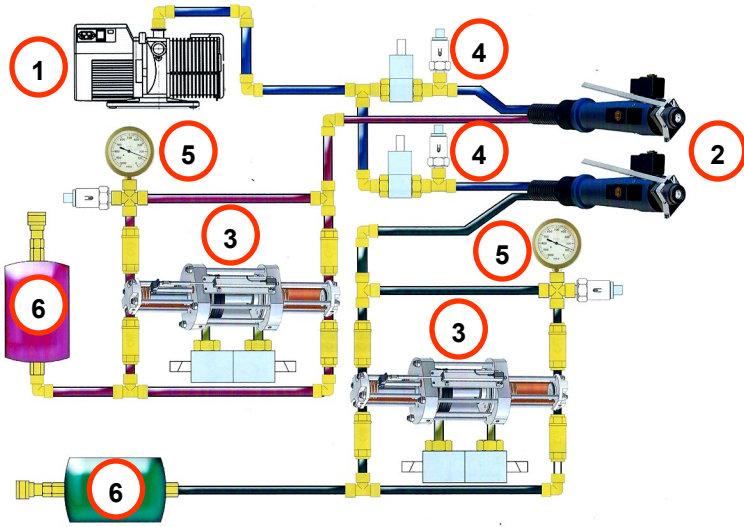
The VTech MRC is an Automatic Evacuation and Refrigerant Charging System for non-flammable gas (e.g. R134a, R404a, R410a, R452a, R448a). The system performs an automatic vacuum cycle and a vacuum decay leak test, prior to refrigerant charging. Due to its fast cycle and product traceability features, it is particularly suitable for medium-high production assembly lines such as in domestic refrigeration and air conditioning. Customizable elements include metering device, vacuum pump, single or multiple stations, lay-out.

An All-in-One configuration combines Pressure Decay and Tracer Gas leak testing prior to refrigerant charging in the same equipment.

MAIN FEATURES:

- **Friendly:** automatic cycle selection eliminates guesswork and operator error
- **Dependable:** extremely accurate refrigerant metering and consistent results
- **Customizable:** wide selection of options to create the right configuration for every process
- **Data Management** and process data traceability

Equipment Lay-Out



1. Vacuum Pump
2. Filling Heads
3. Metering Device
4. Leak Test Valve
5. Relief Valve
6. Refrigerant Supply

Shown above is MRC-2, Single Vacuum, Dual Refrigerant Charging System

Product Selection Guide

The VTech MRC is available in multiple configurations to meet virtually any production requirement. Here are the most popular combinations of vacuum pump vs. number of refrigerants (others available on request):

Model	No. Vacuum Pumps	No. Refrigerants
MRC-1	1	1
MRC-2	1	2
MRC-2-2	2	2

Additional available options:

- Pneumatic filler coupler
- Double-side evacuation
- Data management and process traceability
- Bar code reader and more....

Equipment Specifications

Refrigerants	HFC-HFO (e.g. R134a, R404a, R410a, R452a, R448a, others on request)
Charging Accuracy	$\pm 0.035 \text{ oz} < 3.5 \text{ oz} / \pm 0.5\% > 3.5 \text{ oz}$
Charging Speed	Up to 5 oz/s*
Vacuum Pump Size	7, 10, or 15 cfm
User Interface	12" touch screen (15" or 17" optional)
Control	PLC
Cycle presets (recipes)	50 (expandable to 200)
Dimensions	1600 mm x 600 mm x 800 mm
Weight	180 kg
Power supply	208 V, 60 Hz



*Depending on refrigerant and metering device configuration